

*Hubble
Bisbee*

CHRISTIE'S
INTERNATIONAL REAL ESTATE



GLEN ARM
12301 MANOR ROAD



LOCATIONS

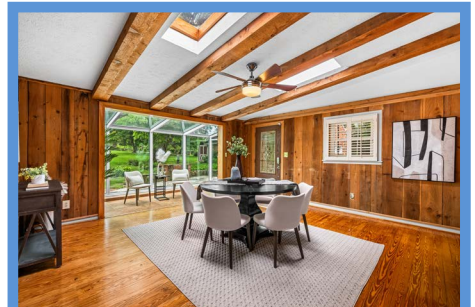
2330 W Joppa Road, Suite 104
Lutherville, MD 21093
181 Harry S Truman Pkwy Ste 200
Annapolis, MD 21401

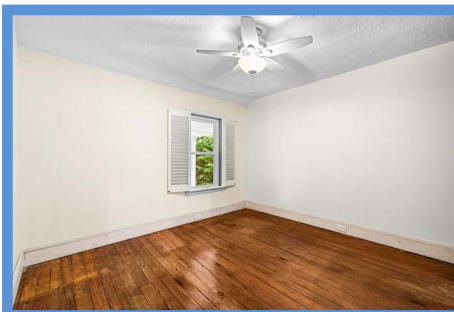
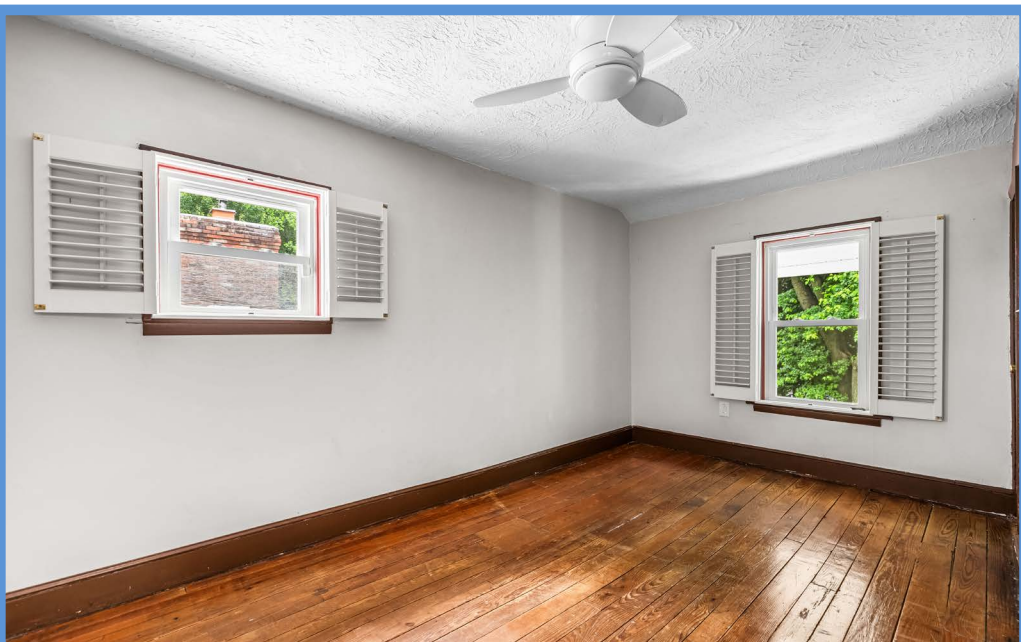
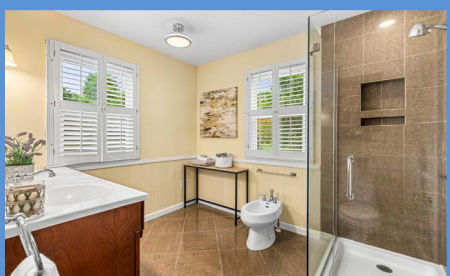
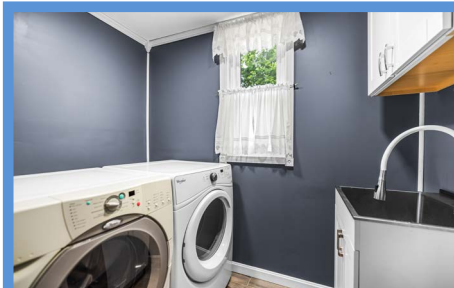
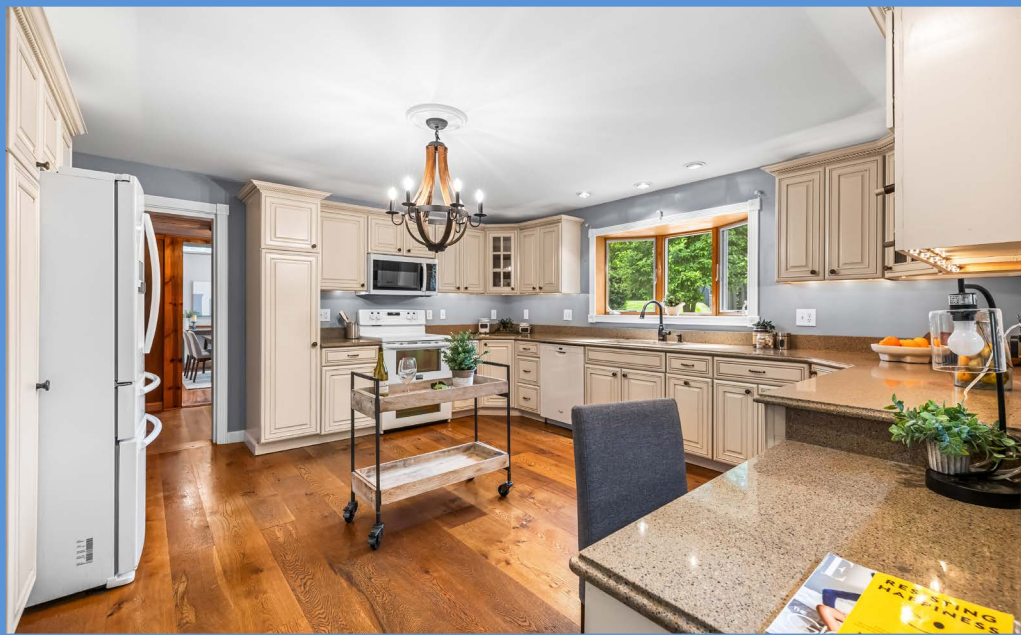


ORIET MILMOE

REALTOR®
Oriet@HubbleBisbee.com
410-960-6023(Mobile)
410-321-1411 (Office)

WWW.HUBBLEBISBEE.COM | (410) 321-1411 (OFFICE) | 





FOYER 14'9" X 9'2"

- Wood finish entry door with leaded glass oval window and sidelight
- Stone finish ceramic tile floor
- Open pine staircase with hardwood handrails and painted spindles
- Crown molding
- Powder Room with beadboard wainscot, vanity and overhead lighting, Kohler flush, and exhaust fan
- Concealed staircase to Lower Level
- Closet
- Art glass ceiling light
- Cased portal to Kitchen
- Cased portal to Living Room
- Pocket door to Office

OFFICE 14'9" X 11'2"

- Pine flooring
- Paneled walls
- Full-width stone wall with woodburning fireplace on raised hearth
- Double window with plantation shutters
- Crown molding
- Recessed lighting

LIVING ROOM 20'5" X 14'9"

- Pine flooring
- Coffered ceiling
- Brick walls and wood paneled walls
- Full-width brick wall with pellet stove fireplace insert on raised hearth
- Two windows with plantation shutters
- Bookcases flanking fireplace
- Recessed lighting
- Wide cased portal to Dining Room

DINING ROOM 15'10" X 15'2"

- Pine flooring
- Vaulted ceiling with wood beams and 2 skylights
- Brick wall and wood paneled walls
- Window with plantation shutters
- Exit door with leaded glass window
- Ceiling fan with light
- Access to Kitchen
- Wide cased portal to Sunroom

SUNROOM 15'6" X 6'0"

- Stone finish ceramic tile floor
- Three walls of windows with greenhouse ceiling
- Brick interior wall with wall sconce lighting

KITCHEN 16'2" X 15'6"

- Wide plank hardwood flooring
- Antique white raised-panel wood cabinetry including planning desk, pantry cabinet, wine rack, glass-door cabinets, lazy-Susan base cabinets, pull-out trash/recycle bin, dovetailed drawers and matching crown trim
- Granite counters
- Samsung French door refrigerator with water/ice dispenser
- Frigidaire electric range with 2 ovens
- Built-in microwave
- Whirlpool dishwasher
- Double undermount sink with Insinkerator disposal
- Bay window
- Pantry closet
- Wood 6-light chandelier

- Recessed lighting
- Under-cabinet lighting
- Above cabinet cove lighting
- Access to Hall

HALL 8'3" X 7'10"

- Wide plank hardwood flooring
- Wood paneled walls
- Beadboard paneled ceiling
- Wall of closets
- Ceiling light
- Wood sliding barn door to Laundry Room
- Cased portal to Family Room

FAMILY ROOM 31'3" X 15'11"

- Vaulted wood paneled ceilings with skylight
- Wood flooring with ceramic tile at exit doors
- Brick wall with woodburning fireplace on raised hearth with wood mantel shelf and glass doors
- Triple window and 2 clerestory windows
- Sliding glass doors to Patio
- Chair rail
- Recessed lighting

LAUNDRY ROOM 7'10" X 5'6"

- Wood finish ceramic tile floor
- Base cabinet with stainless steel sink
- Wall cabinet
- Linen closet
- Whirlpool washer and dryer
- Window
- Crown molding
- Recessed lighting

UPPER LEVEL**HALL**

- Pine flooring
- Linen closet
- Ceiling lighting

PRIMARY BEDROOM 15'7" X 15'5"

- Pine flooring
- Beadboard paneled wall
- Three windows with plantation shutters
- Walk-in cedar closet
- Ceiling fan
- Passage to Primary Bath with walk-in closet and linen closet

PRIMARY BATH 9'8" X 8'5"

- Stone finish ceramic tile floor and shower stall walls
- Beadboard wainscot
- Double vanity with solid surface top and seamless sinks, framed mirror and wall sconce lighting
- Glass enclosed shower stall with recessed light
- Kohler flush and bidet
- Two windows with plantation shutters
- Ceiling light
- Exhaust fan

BEDROOM 2 15'1" X 8'8"

- Pine flooring
- Two windows with plantation shutters
- Closet
- Ceiling fan

BEDROOM 3 12'5" X 11'1"

- Pine flooring
- Window with plantation shutters
- Closet with mirrored doors
- Ceiling fan with light

HALL BATH 7'5" X 5'9"

- Stone finish ceramic tile floor and tub surround
- Beadboard wainscot
- Vanity with solid surface top and seamless sink, framed mirror and wall sconce lighting
- Tub/shower combination with glass doors
- Kohler flush
- Window with plantation shutters
- Ceiling light/exhaust fan

LOWER LEVEL

- Partial basement
- Unfinished with 2 rooms
- French drain system
- Armstrong HVAC unit with oil heat backup
- Rheem electric water heater
- Fuel oil storage tank
- Sump pump
- Work bench
- Electric service panels
- Exit door

EXTERIOR

- Brick with vinyl siding
- Two-story front portico with 4 columns and marble tile floor
- Asphalt shingle roof
- Replaced windows
- Flagstone walkways
- Covered side porch with access from Dining Room
- Marble tile patio with brick walkway to paver patio
- Paver block patio with garden walls and paver firepit with built-in paver seating
- Kohler emergency generator
- Gated octagonal gazebo with access to brick steps to pool
- In-ground pool with concrete pool decking and patio, black metal fence enclosure
- Additional brick steps with gate to pool
- Detached 2-car brick garage
- Flat 1.8 acre lot

All information contained herein deemed reliable but not guaranteed by the Broker

